

FOR LEASE

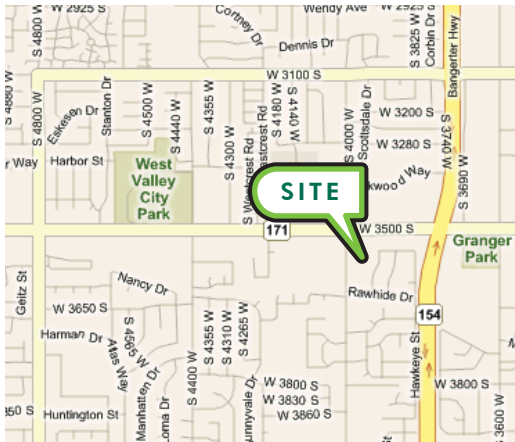
HARMON BUILDING

3540 SOUTH 4000 WEST :: SALT LAKE CITY, UT

Medical or Office
Space Available
For Lease



LOCATION MAP



FEATURES:

- \$16.00 RSF/Full Service
- Ample parking
- Central Valley location
- Suites from 810 RSF - 2,513 RSF
- Medical or office space available
- Convenient access to Bangerter Highway and I-215
- Beautiful renovation
- Tenant improvements available

FOR MORE
INFORMATION
PLEASE
CONTACT

Marty Plunkett, CCIM

Vice President
801.947.3975
marty.plunkett@cbre.com
www.cbre.com/marty.plunkett

Melissa Adamson

Senior Associate
801.947.3974
melissa.adamson@cbre.com
www.cbre.com/melissa.adamson

Dave Heninger

Senior Associate
801.947.3941
dave.heninger@cbre.com
www.cbre.com/dave.heninger



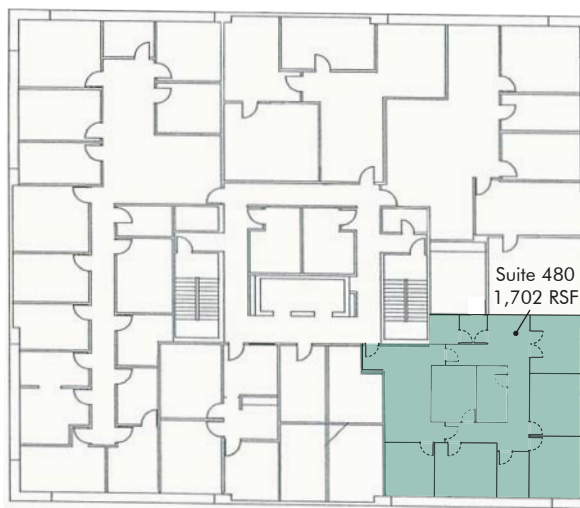
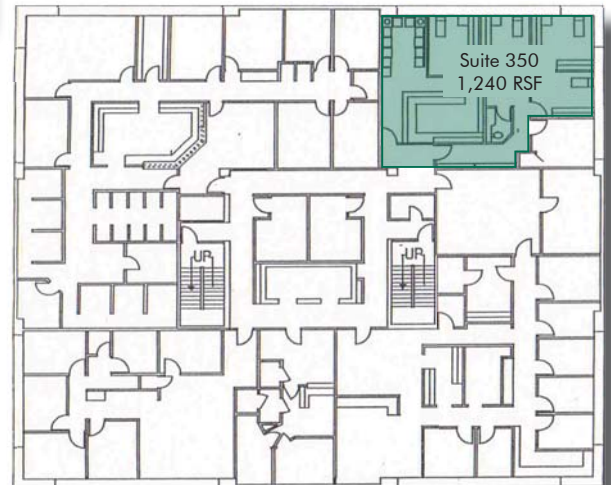
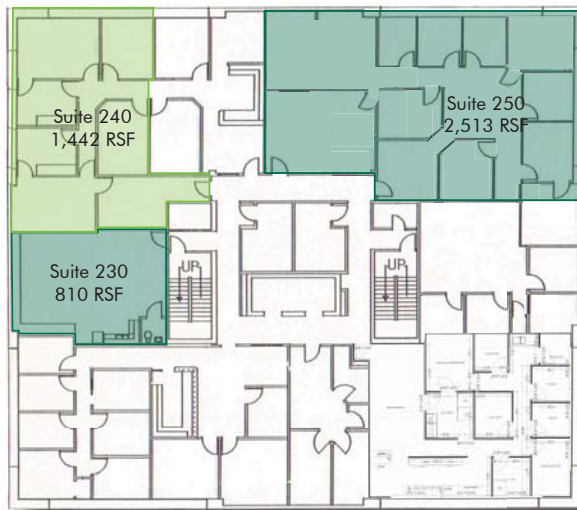
FOR LEASE



HARMON BUILDING

3540 SOUTH 4000 WEST :: SALT LAKE CITY, UT

FLOOR PLANS



CB Richard Ellis | 2755 E. Cottonwood Parkway | Suite 100 | Salt Lake City, UT 84121

©2009 CB Richard Ellis, Inc. The information above has been obtained from sources believed reliable. While we do not doubt its accuracy, we have not verified it and make no guarantee, warranty or representation about it. It is your responsibility to independently confirm its accuracy and completeness.

